

# INSTRUCTION MANUAL



---

**TAS 408F**  
400W RMS



Installation of this product must be carried out by a qualified professional.

# TAS 408F

## ACTIVE BOX WITH 1 8-INCH SPEAKER

The TAS 408F active speaker was designed to reproduce low frequencies, known as sub-bass. Responsible for reproducing deep and impactful sounds in receiver systems with a frequency response of (10Hz to 250Hz), it guarantees accurate and natural audio reproduction throughout its entire range.



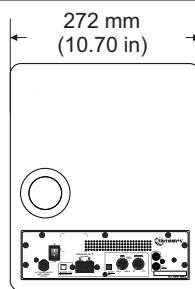
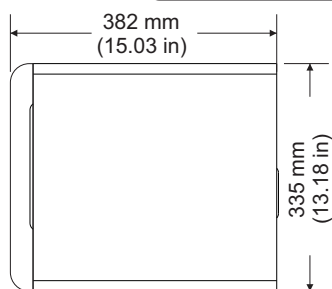
### Technical Parameters

Power	400W RMS
Polegada	8 INCH
Input impedance	2K Ohms
Sensitivity	100 mV
Amplifier class	D
Frequency response (-3 dB)	10 Hz a 250 Hz
Crossover LPF	50Hz a 250Hz (-12dB/octava)
Resonance frequency	29 Hz
Power tension	90 a 240 Vac (AUTOMATIC)
Maximum consumption	220Vac- 585W / 127Vac - 470W
Dimensions (AxLxP)	335 x 272 x 382 mm
Acoustic componentens	1 SPEAKER 8 INCH
Cone material	Polypropylene
Cabinet	Vented Box
Cabinet finishing	Laminate
Cor	Black Ébony
Fabric finishing	Black Fabric
Cabinet weight	12.5 Kg
Product warranty	12 Months

### Product Dimensions



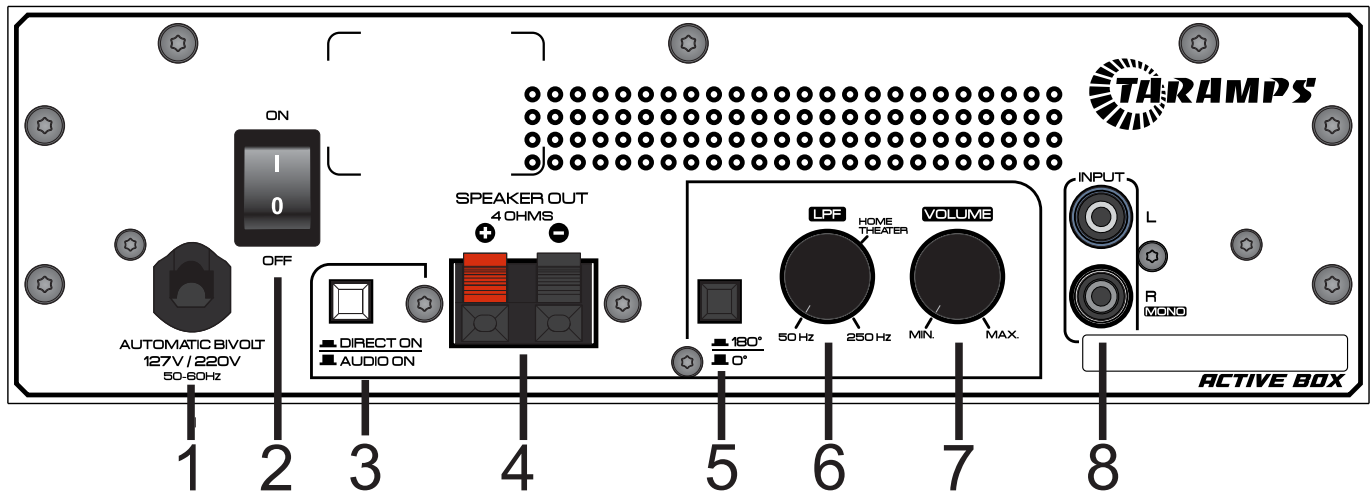
**NOTA: To achieve better sound quality, it's important to position the back of your speaker close to the wall, at a distance between 10 and 20 centimeters**



[www.taramps.com.br](http://www.taramps.com.br)

Rod. Julio Budisk SP 501 s/n, - Compl. KM 30-A/SP ZIP:19.180-000 Phone Number +55 (18) 3266-4050 National Registry(CNPJ): 23.372.795/0001-64

Note: Features, specifications and aesthetics are subject to change without notice.



1 - **Power Cable:** Connect the cable to the electricity network. This product operates with a power supply between 90 and 240 VAC.

2 - **ON / OFF Switch:**

The key puts the product on standby, leaving it ready to be turned on using the DIRECT ON / AUDIO ON key.

3 - **DIRECT ON / AUDIO ON :**

**DIRECT ON :** Turns the subwoofer on and off using the on/off switch.

**AUDIO ON:** With the switch in the audio on position, the product turns on when it receives an audio signal and turns off after approximately 10 minutes without audio.

4 - **SPEAKER OUT:** Output for connecting a 4 ohm passive speaker. (Example TPS 408F passive taramps Box)

5 - **0° / 180°:** With the key pressed, inverts the phase of the audio signal by 180°. (To correct cancellation)

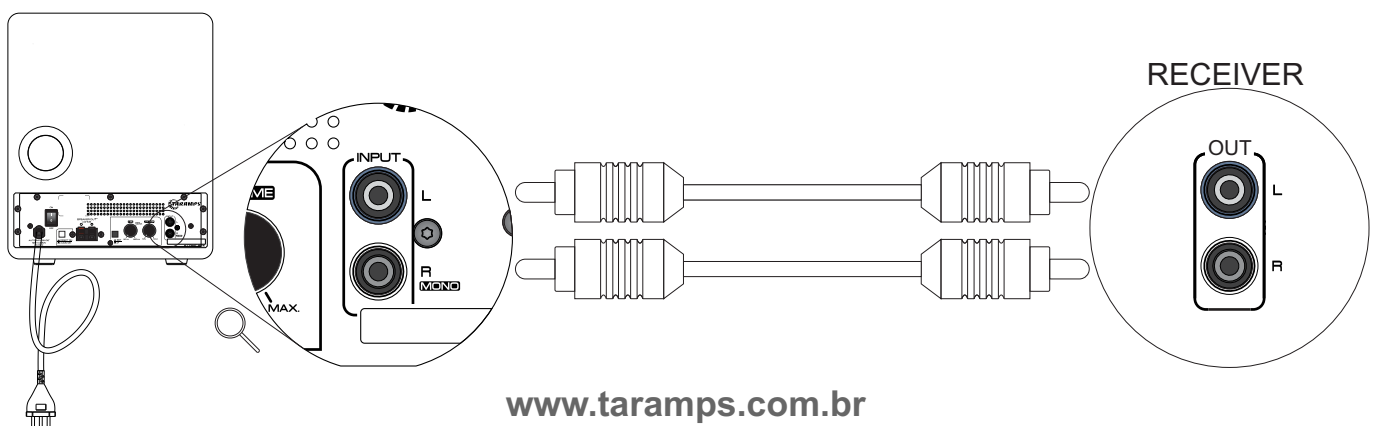
6 - **LPF:** Low pass filter. Variable adjustment of the maximum cutoff frequency from 50Hz to 250Hz. The point marked on the scale as "Home theater" is a suggestion for using the active box in a movie theater.

7 - **Volume:** Adjust the amplifier's input sensitivity, which allows a perfect adjustment to the output signal levels of market players.

8 - **INPUT (RCA):** Audio inputs. Connect them to the RCA outputs of the audio reproduction system, using good quality shielded cables to avoid noise capture. For Mono or LFE connection, use the R input.

## Starting The Subwoofer

Connect the receiver/pre output to the subwoofer input.



[www.taramps.com.br](http://www.taramps.com.br)

Rod. Julio Budisk SP 501 s/n, - Compl. KM 30-A/SP ZIP:19.180-000 Phone Number +55 (18) 3266-4050 National Registry(CNPJ): 23.372.795/0001-64

Note: Features, specifications and aesthetics are subject to change without notice.